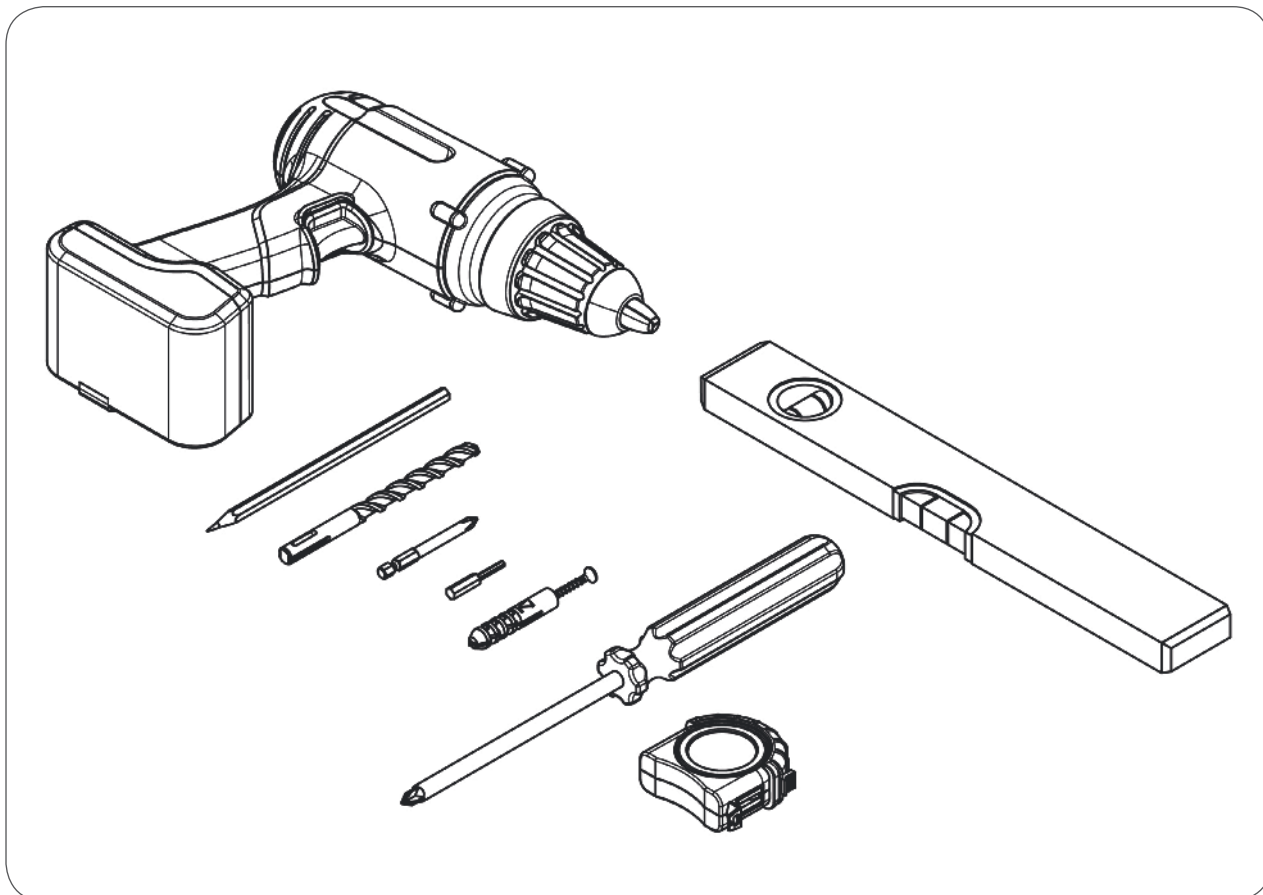




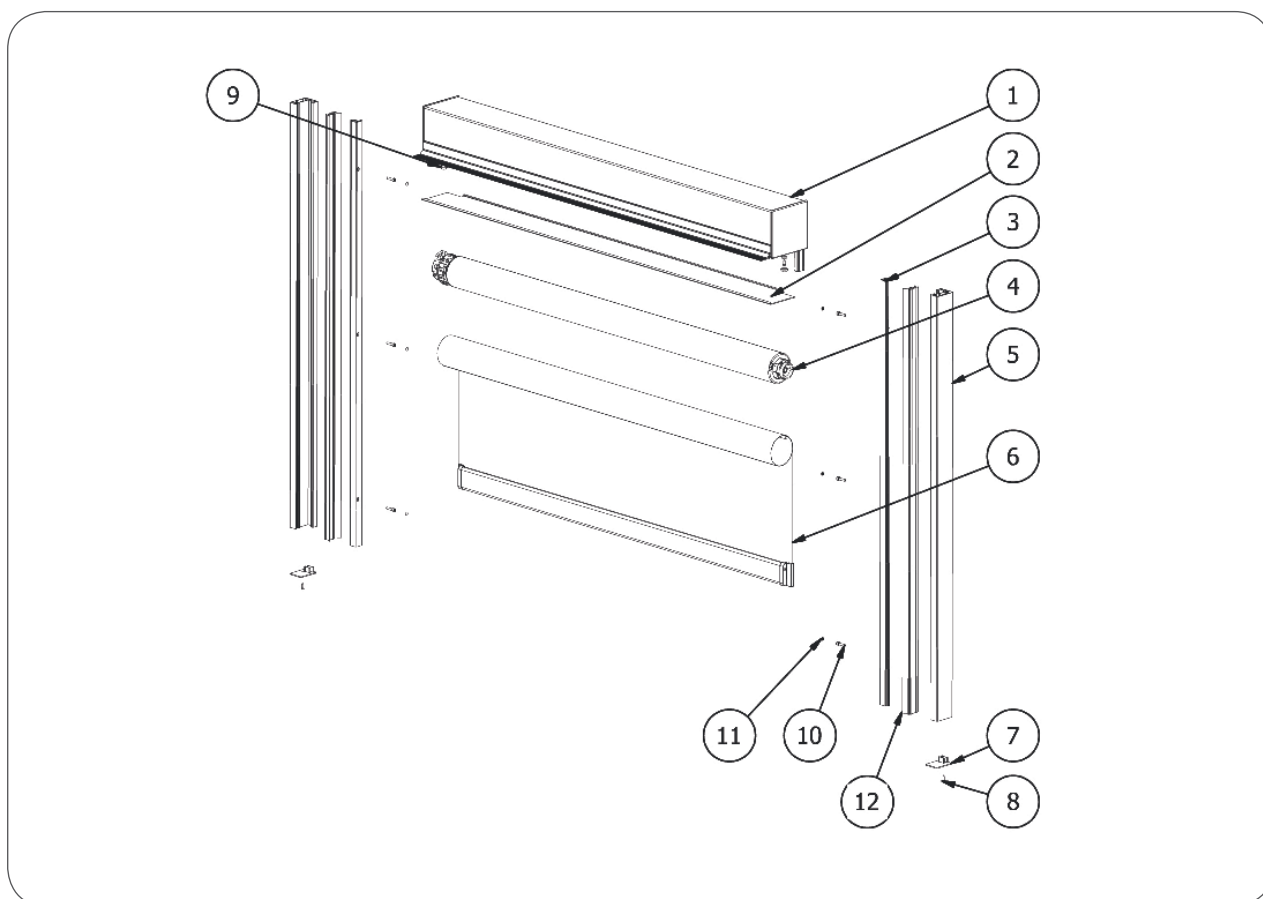
## 1. INSTALLATION TOOLS



## 2. PRE-ASSEMBLY WORK

### 2.1. List of components

 Before the installation it is necessary to unpack the item and check its quantity and quality.



	Name of the component	Catalogue code	
		SRS90_SP/100	SRS90_SP/120
1.	Assembled screen box		
2.	Revision flap	SRS90 PR/100	SRS90 PR/120
3.	Guide channel - front	PP SRS/P	
4.	Equipped reel		
5.	Guide channel - rear	PP SRS/35/T	
6.	Equipped fabric		
7.	Guide channel side lock	ZPP SRS/35	
8.	Galvanized screw 2,9 x 13 mm	WKR/Zn/S/2,9x13	
9.	PVC cap with cover + Galvanized screw 3,9 x 9,5 mm	ZPK 10 + WKR/Zn/W/3,9x9,5	
10.	Guide channels assembly bolts	WKR/Zn/H/M4x18	
11.	PVC cap	ZP 3/H	
12.	ZIP tensioner		

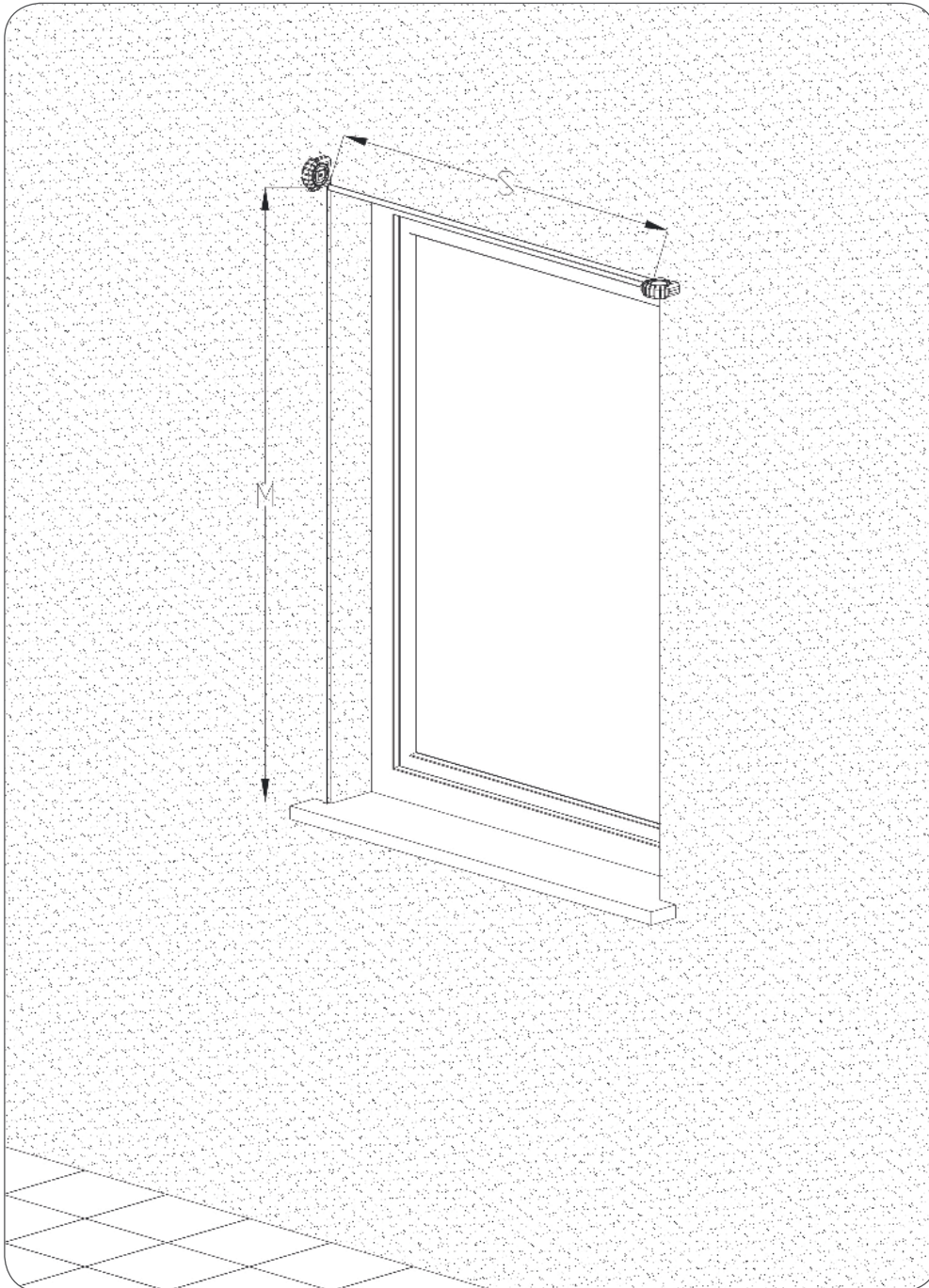
## 2.2. Dimensioning

Where:

**S** - RECESS WIDTH

**M** - RECESS HEIGHT

 Check the compliance of the dimensions for screen mounting location.






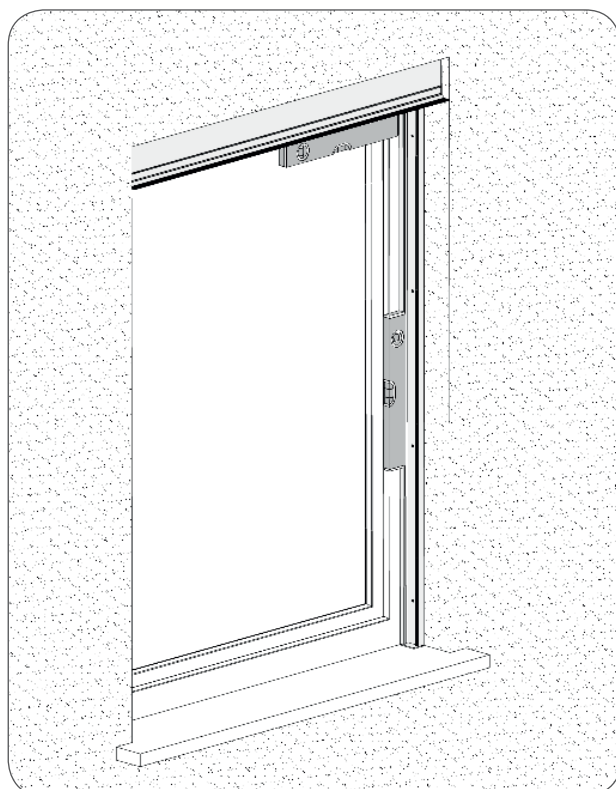
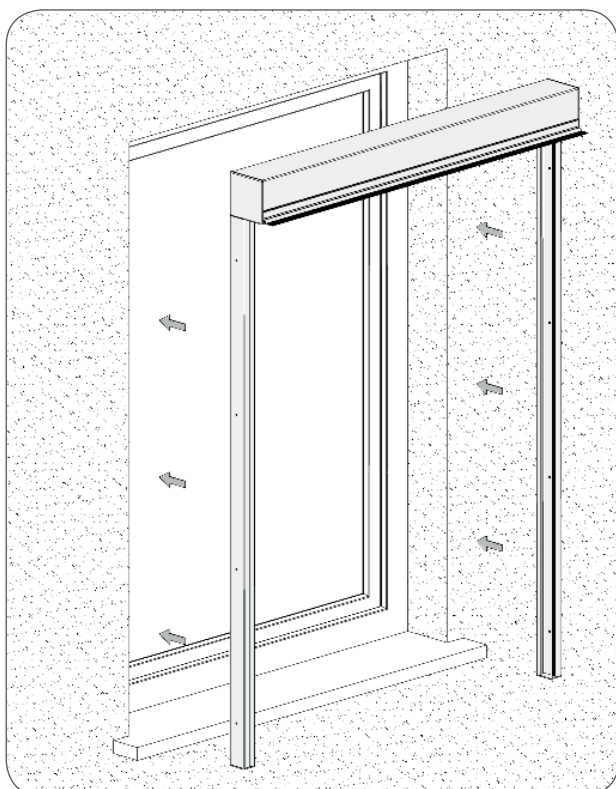
### 3. SCHEME FOR RECESS FITTING

a) Place the box on the guide channels and screw the guide channels side locks.

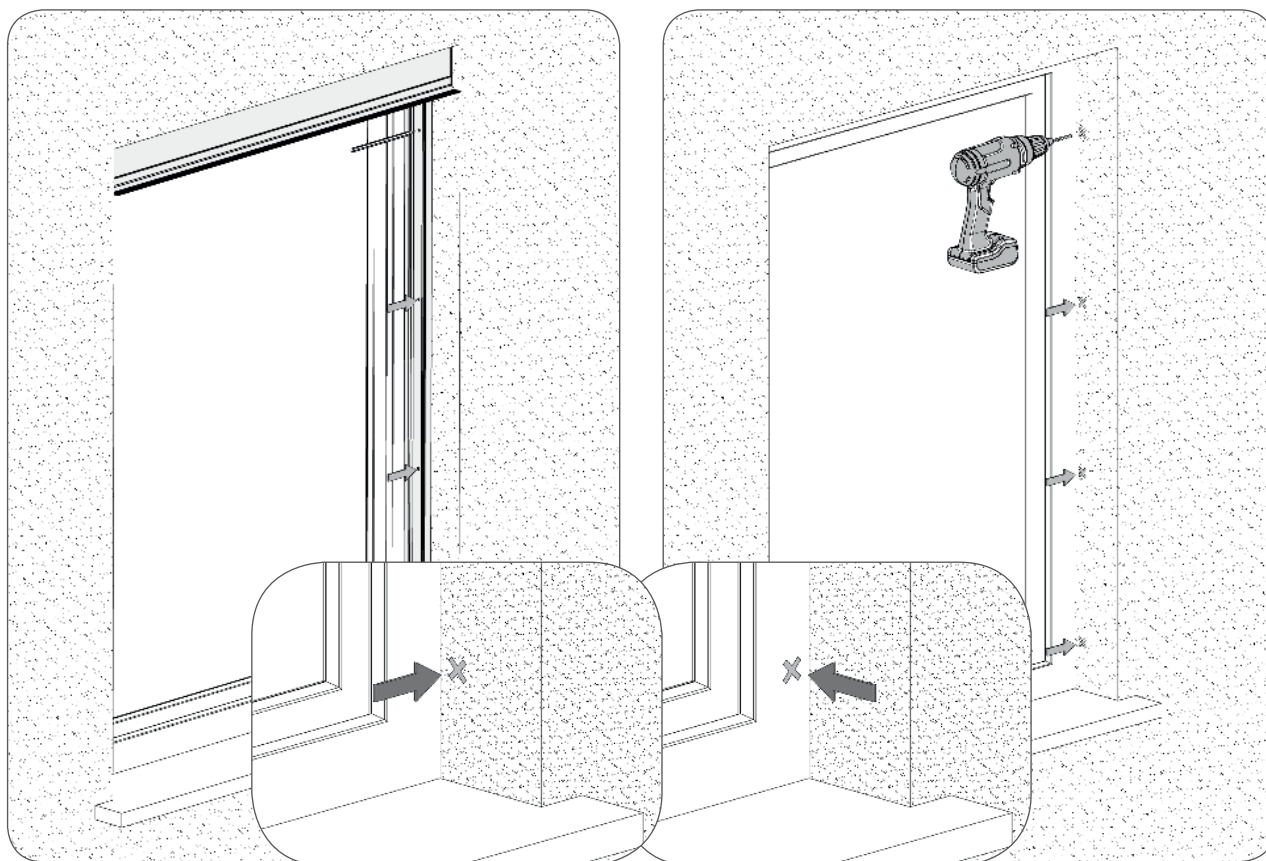


 For screen installation in the recess side locks are optional.

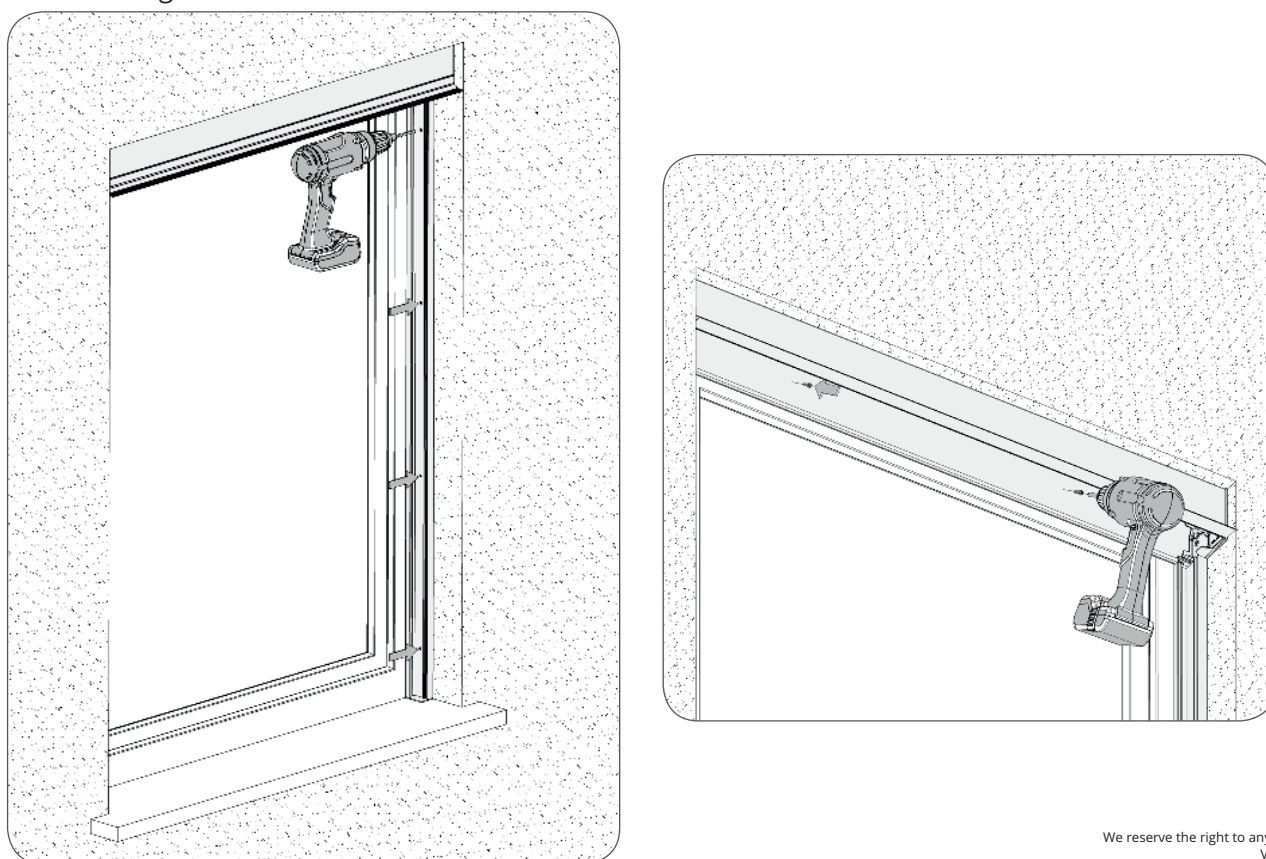
b) Position the guide channels and check the perpendicularity.

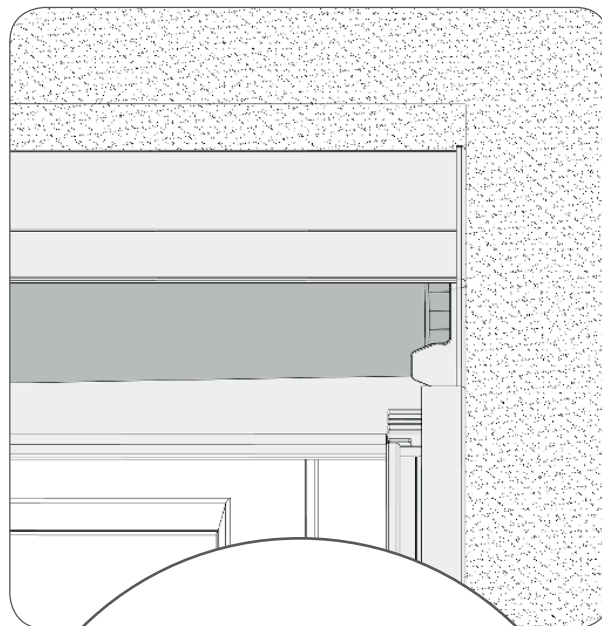
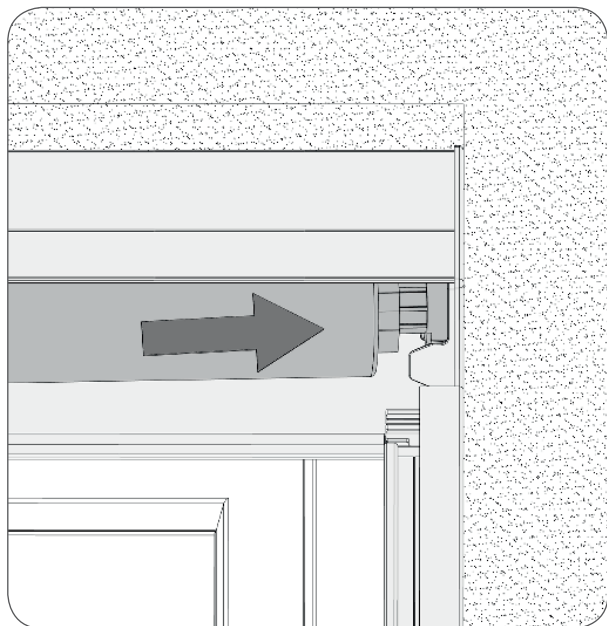


c) Mark and drill the holes.

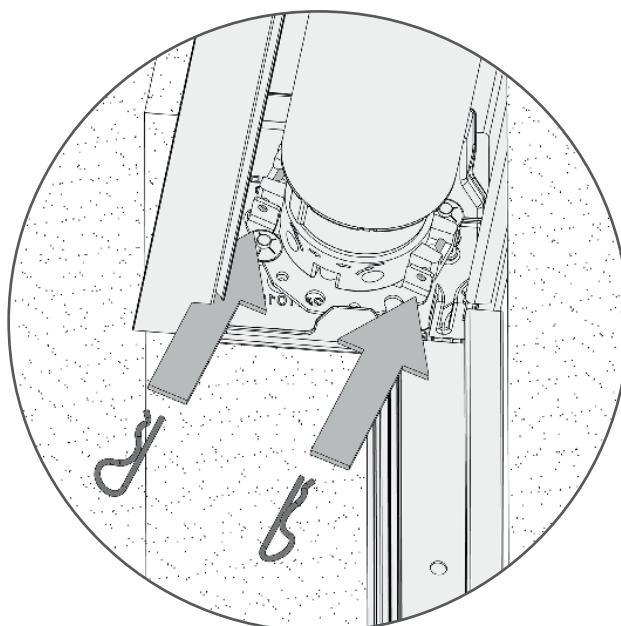
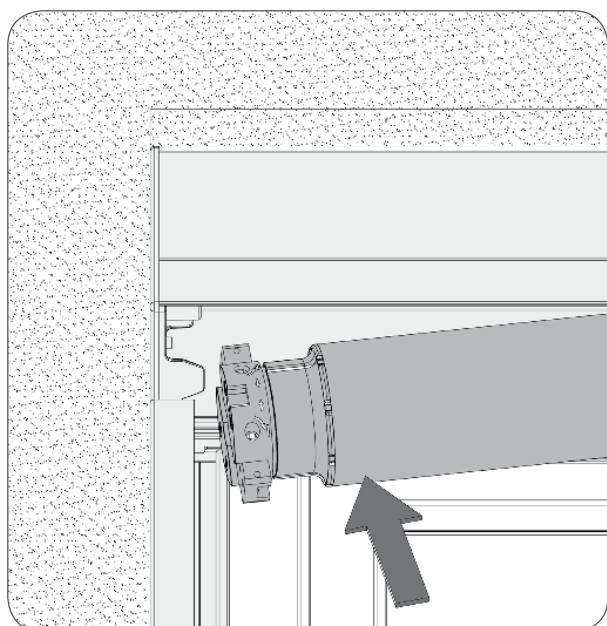
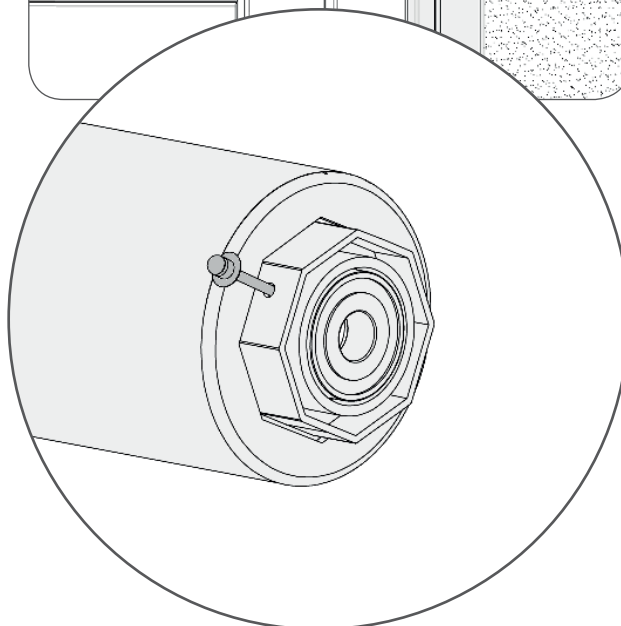


d) Screw on the guide channels and the box.

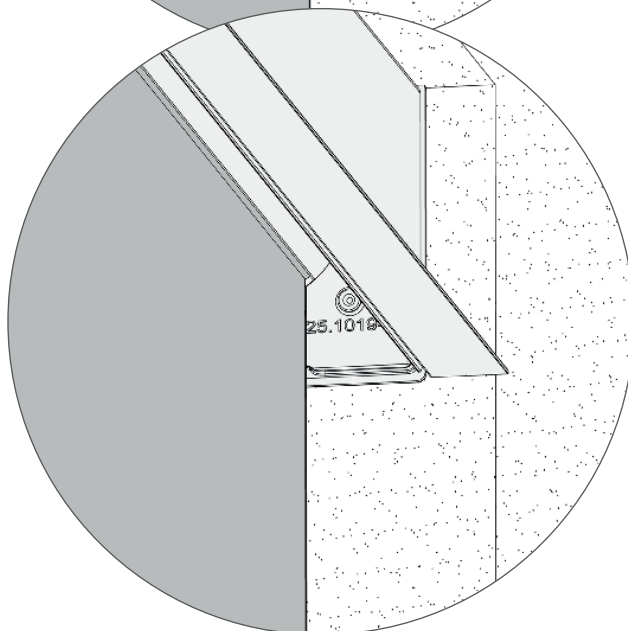
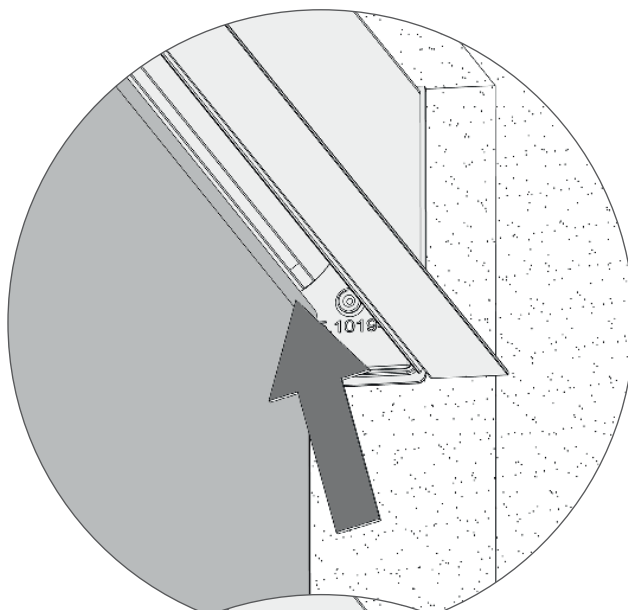
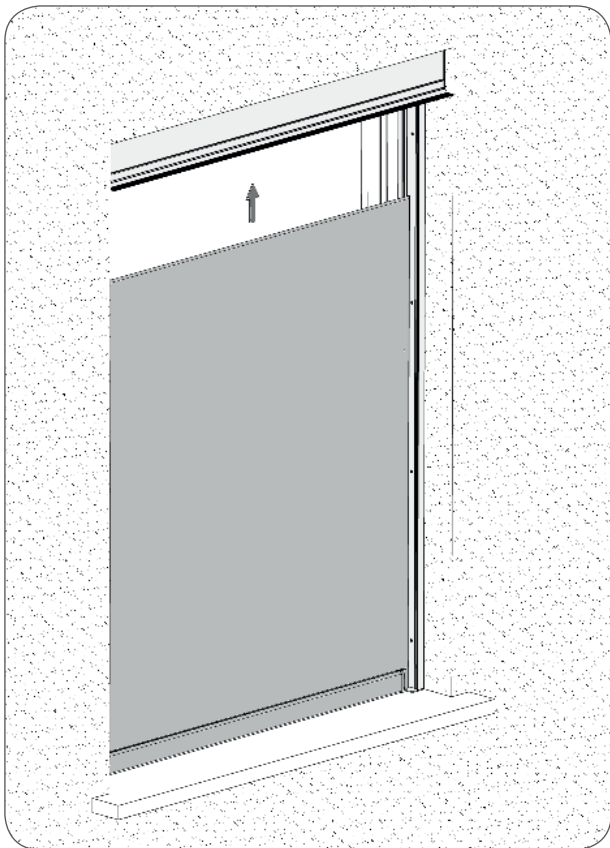




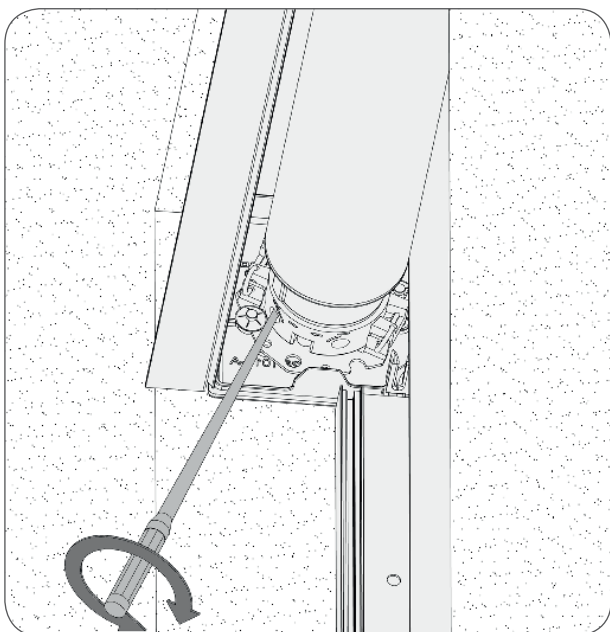
⚠ When placing the reel push telescopic cap as much as possible.  
The telescopic cap can be locked with a rivet.



e) Snap the fabric in the reel

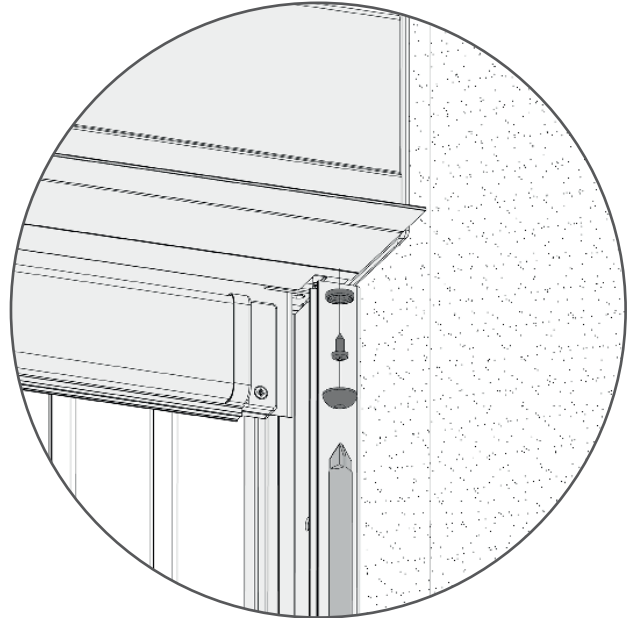
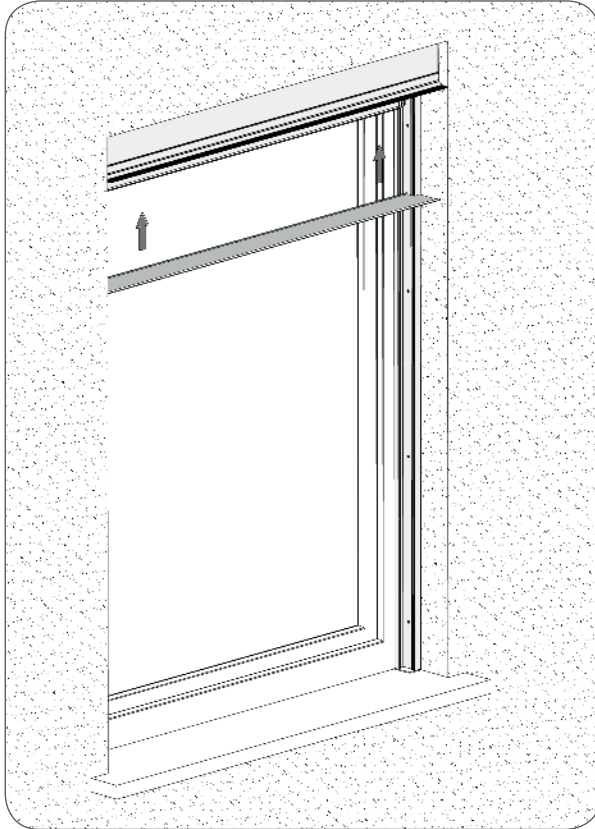


f) Set the end positions.

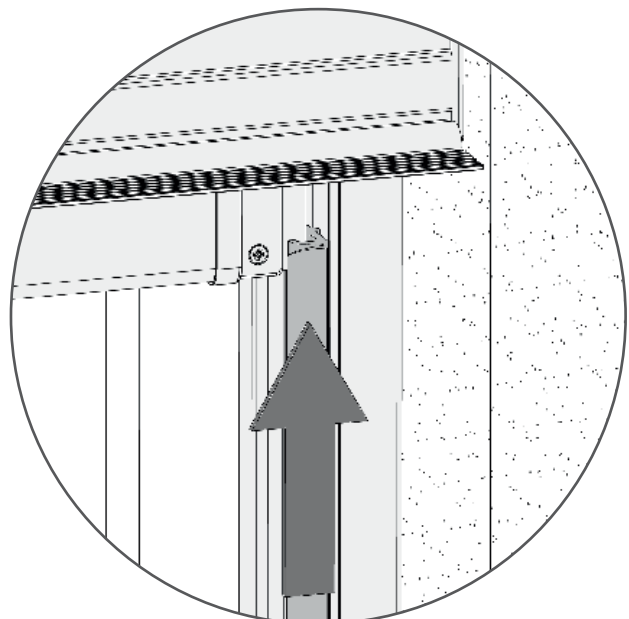
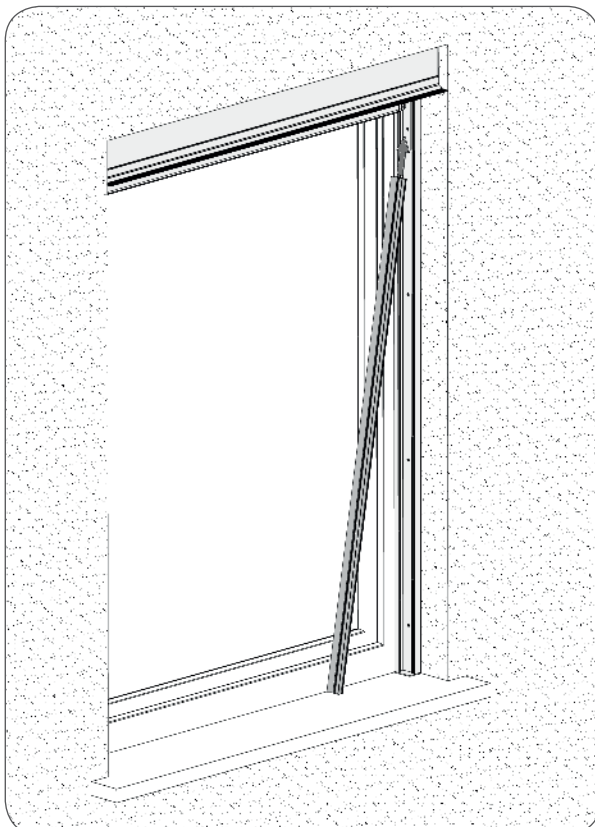




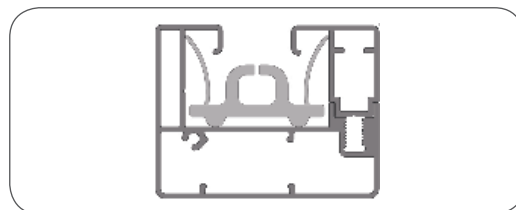
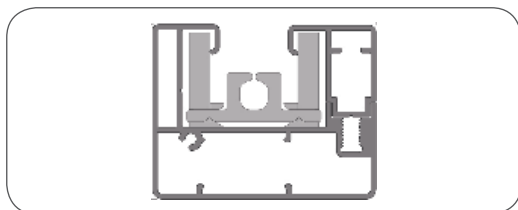
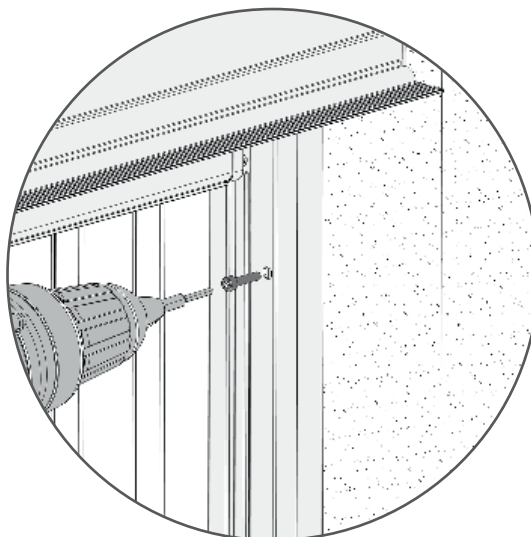
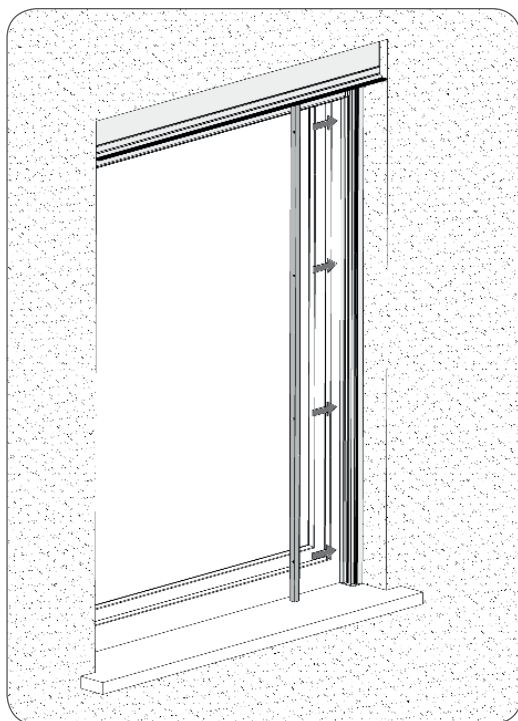
g) Close the box



h) Insert the ZIP tensioner.



i) Screw on guide channel front



j) Place the plugs and check the functioning.

